



AN ISO 9001:2015 Certified Company



Decide with Confidence  
D&B D-U-N-S Number: 02-003-9427

CIN No : U29219MH2006PTC163469

## INJECTION QUILL FOR OIL & GAS, REFINERY AND PETROCHEMICAL INDUSTRY



## COMPANY HISTORY AND GROWTH

- ◉ Spraytech Systems (India) Pvt. Ltd. was founded by Shri. Bapusaheb Kharade in the early 2000s.
- ◉ Initially, the company operated from a 1000 sq. ft. workshop.
- ◉ Over the years, it expanded significantly and now boasts a 7000 sq. ft. modern factory at Thane (Mumbai) and Rabale (Navi Mumbai) spanning 13000 sq. ft.
- ◉ Another factory, located in Indapur (100 km from Pune), covers an impressive 5-acre plant with state-of-the-art machine shop and investment casting foundry.
- ◉ Recently, Spraytech introduced control valves in the product range under the name of Spraytech Automation (India) Pvt Ltd and has factories located at Rabale (Navi Mumbai) and Indapur (Pune).

## ADVANCED FACILITIES

- ◉ All factories are equipped with next-generation CNC machines and heavy material handling equipment.
- ◉ The commitment to world-class product quality is evident in these facilities.

## PRODUCT FOCUS

- ◉ Spraytech specializes in manufacturing spray nozzles.
- ◉ The company's reputation in the market is strong, and it's considered a leading organization in this field.

## WORKFORCE AND CUSTOMER TRUST

- ◉ The motivated and skilled workforce at Spraytech handles orders of varying complexities.
- ◉ Esteemed customers have placed their trust in the company over the years.

## CUSTOMER-CENTRIC APPROACH

- ◉ Spraytech's objectives include commitment to quality, prompt response, technological solutions, on-time delivery, and excellent after-sales service.

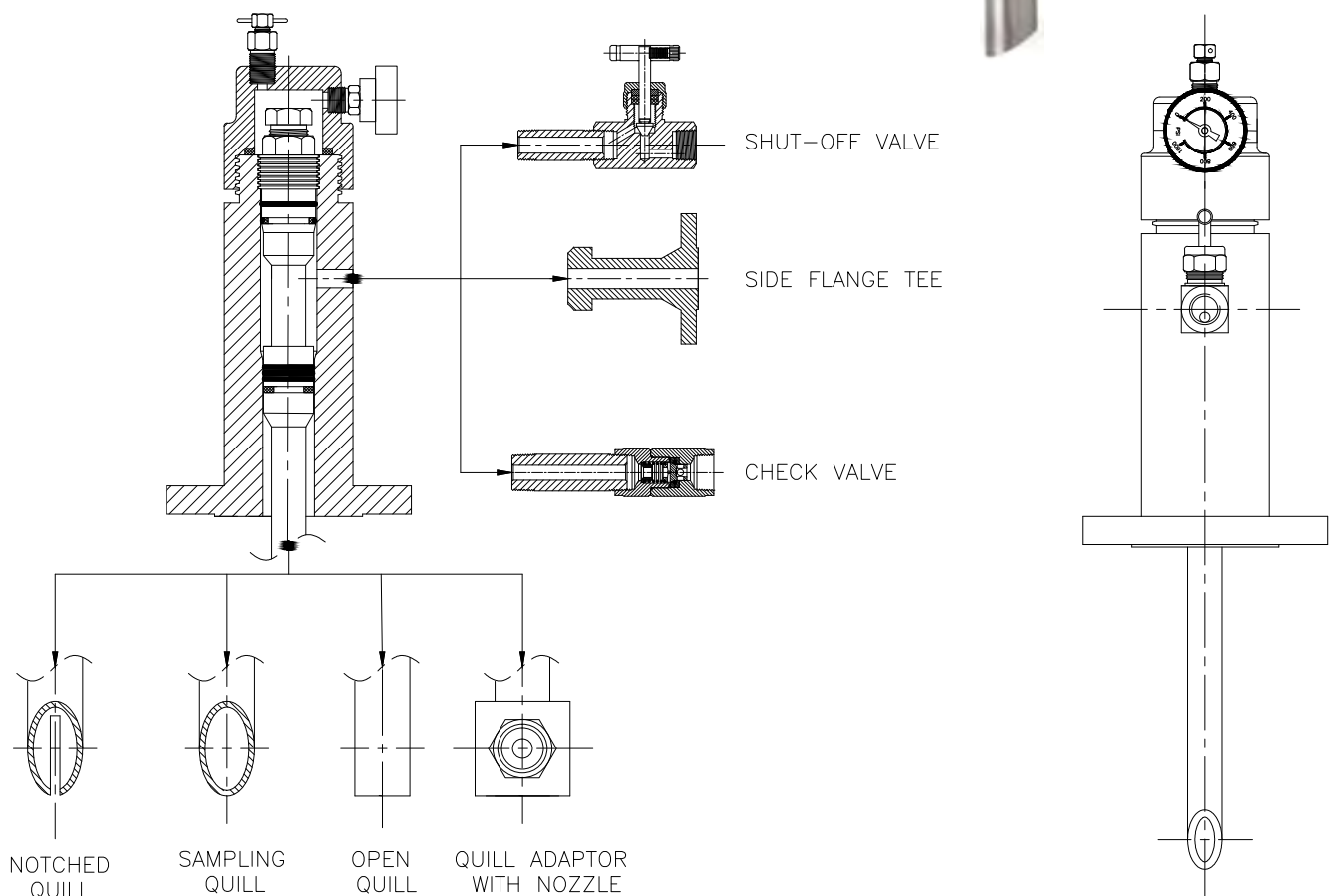
## CHALLENGES AND ADAPTATION

- ◉ Meeting diverse customer demands and staying up to date with market trends are ongoing challenges.
- ◉ Constantly upgrading production equipment and techniques ensures the company remains competitive.
- ◉ **It's evident that Spraytech has made significant strides and continues to prioritize customer satisfaction.**



# ONLINE RETRIEVABLE TYPE CHEMICAL INJECTION QUILL

The Spraytech online retrievable chemical injection quill assembly is the key to the concept of "Access under pressure any time, any place, when used with a Retriever and Service Ball Valve, the Chemical injection quill Assembly permits safe, easy insertion and retrieval of corrosion and erosion monitoring systems as well as preventive maintenance devices for injecting inhibitors or for sampling, etc. while under full operating pressure.

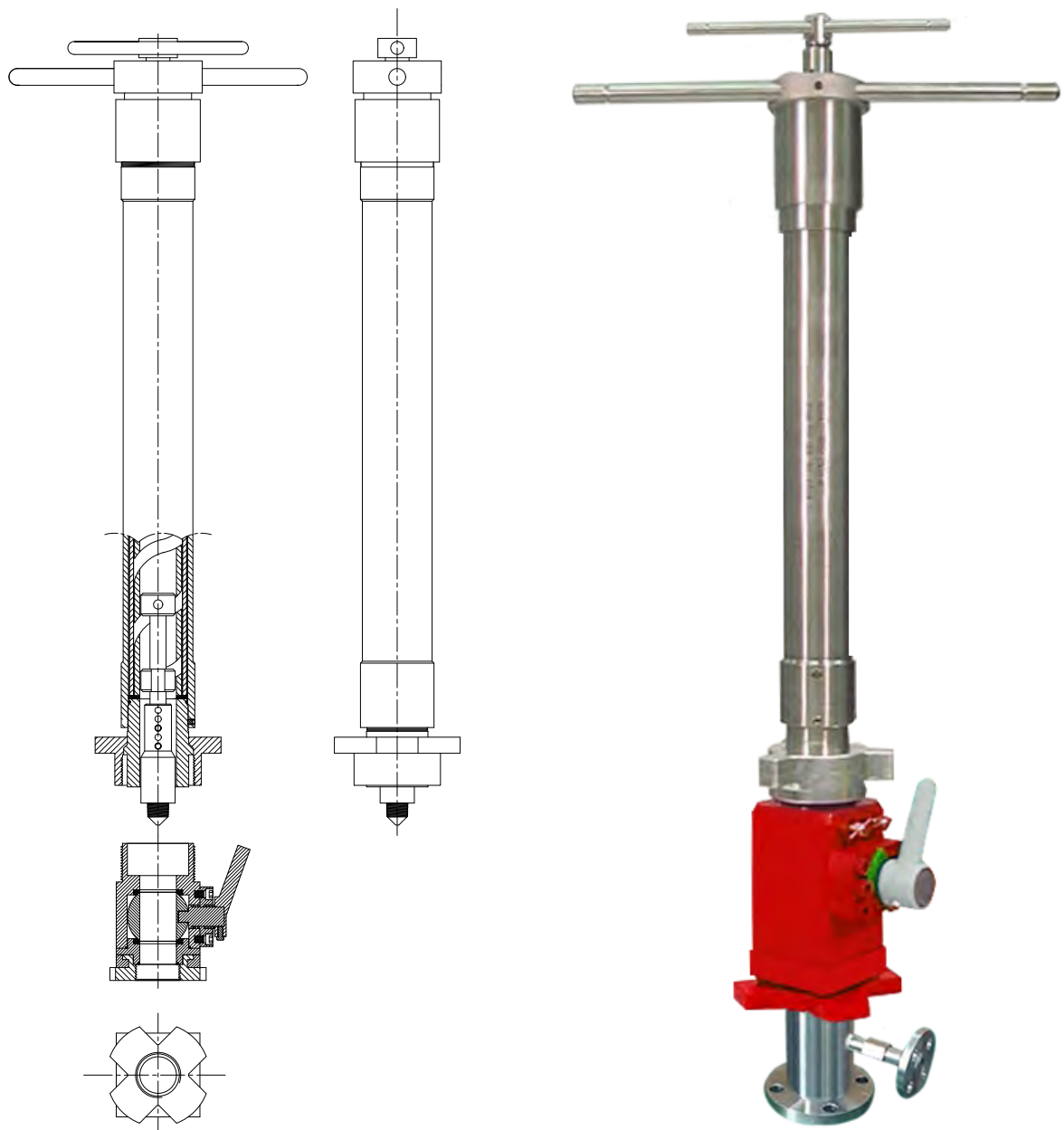


# RETRIEVER TOOL KIT WITH SERVICE BALL VALVE

Spraytech Retrieval Tool and Service Valve is a high-quality tool for installing and retrieving probes and coupons under full operational pressure. Uses a unique technology on bypass valves with replaceable tips made with a soft material to ensure better performance with lower maintenance costs. Comes with a service valve with a built-in bleed off valve that allows tool drainage even on 12 o'clock positions.

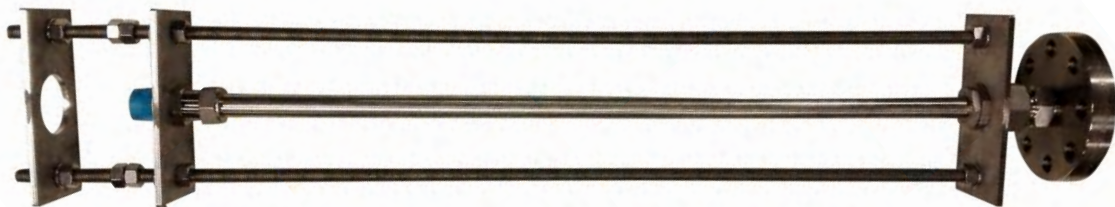
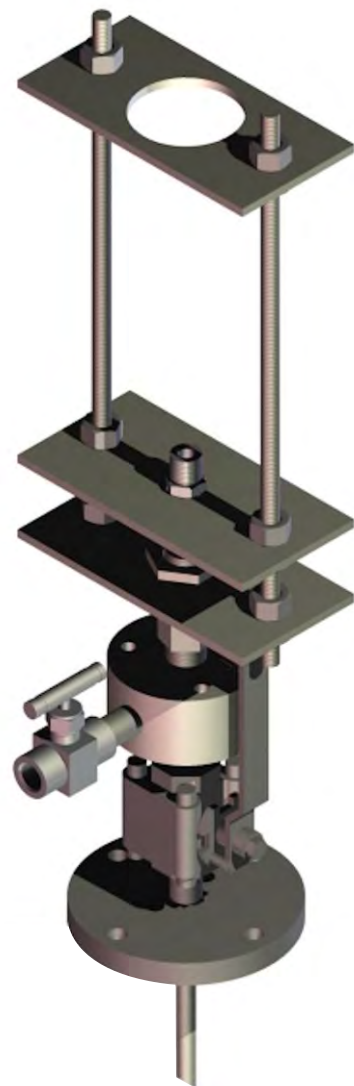
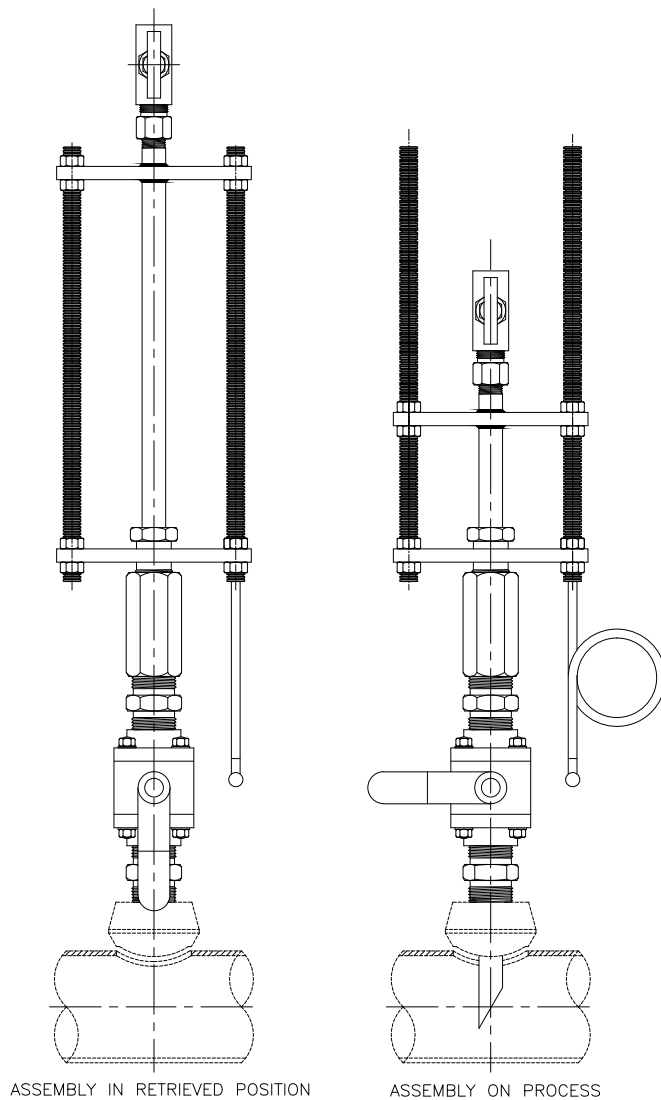
## Features

- Temp. Rating — 15°F - 400°F (-26°C - 204°C)
- Pressure Rating - 2500 PSI.
- Short length construction for single person operation.
- Meets NACE MR0175 and Mr0103
- Compact design to allow retrieval in minimum clearance areas.



# RETRACTABLE INJECTION QUILL WITH SAFETY CLAMP

Retractable injection quill with safety clamp is designed for the accurate locking system allows easy insertion and removal of injection quill shafts. The ability to service this type of equipment on-line has provided a significant advantage, especially in applications where quills or nozzles may block due to process conditions or particles. Injection/sampling is done through a shut off valve at the end of the tube/quill. An optional check valve is available to ensure that the fluid in the system does not back flow to the injection equipment.

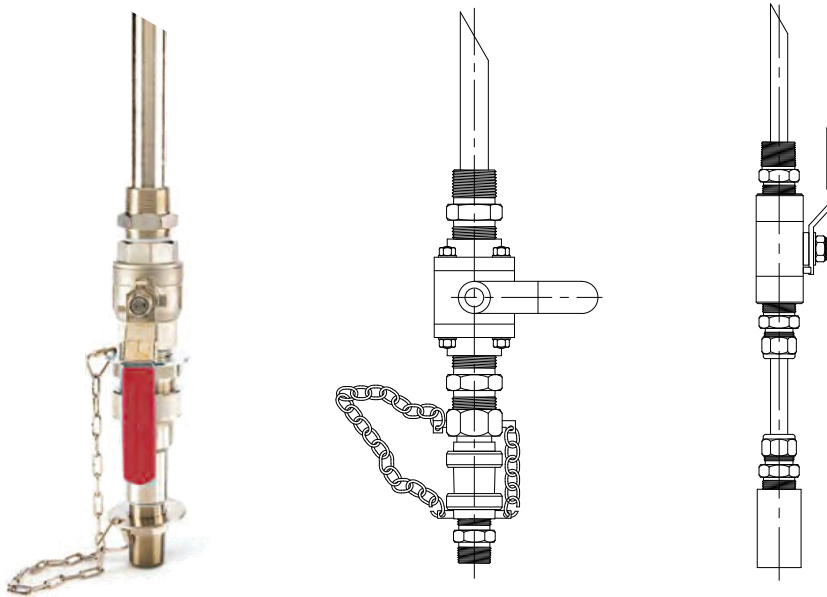


## RETRACTABLE INJECTION QUILL WITH SAFETY CHAIN

---

Safety chain injection quill are designed design for low pressure applications, It's commonly used to inject chemicals via metering pumps into tanks or headers which are under pressure and can be inserted or removed without having to shut down the system. The injection quill extends into the center of the water fluid providing more uniform chemical dispersion.

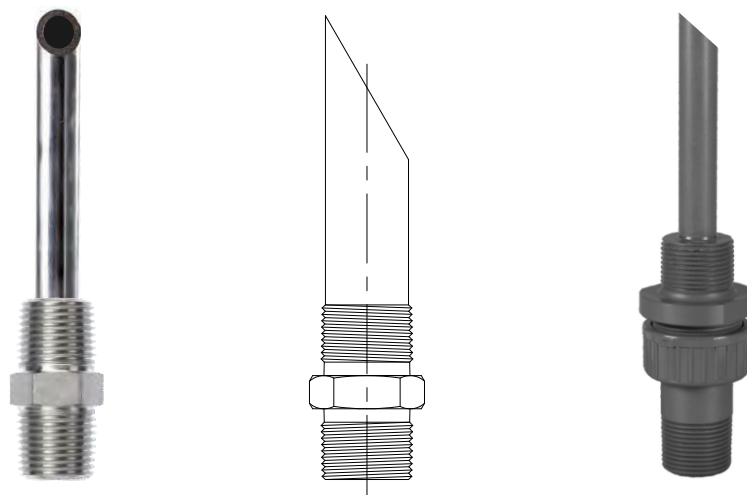
- Available in a variety of materials and lengths.
- Safety chain to prevent the injection quill from being completely withdrawn before the corporation stop valve is closed.



## NON RETRACTABLE INJECTION QUILL

---

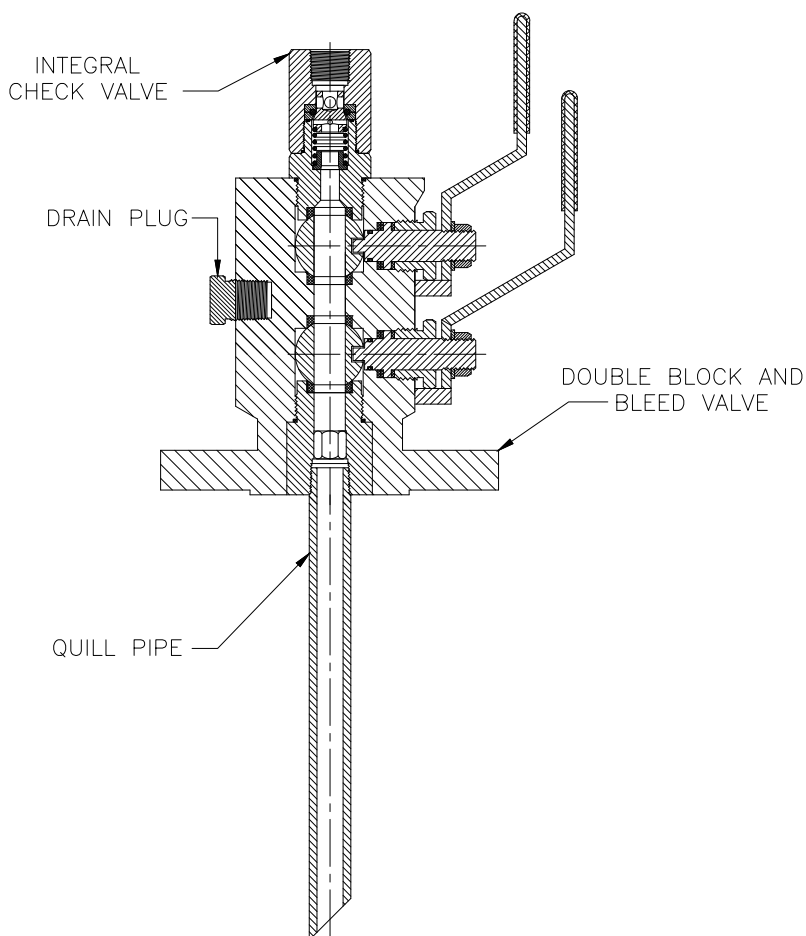
Non-retractable quill are best suited for installations into smaller diameter pipelines that can be shut down or isolated for maintenance of chemical injection process.



# INJECTION QUILLS WITH DOUBLE BLOCK & BLEED VALVE

Injection Quills with Double Block and Bleed Valve are used where there is an often requirement to take a sample of the process fluid or inject a particular chemical directly into the process stream at full operating pressures and temperatures.

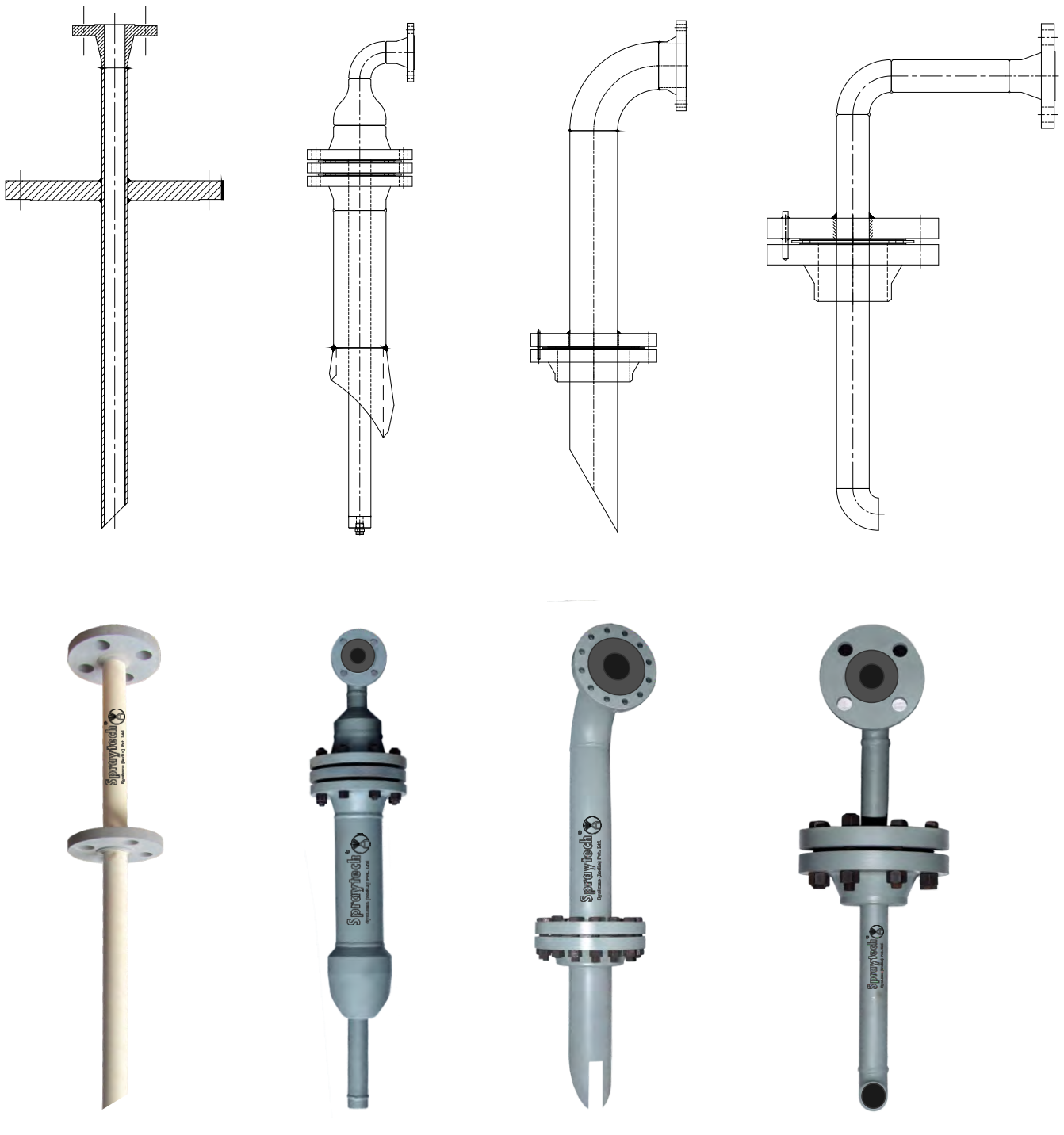
Using the primary and secondary isolation valves the required chemical is injected directly into the process stream. It is usual for Injection Valves to be fitted with a non-return check valve that only opens when chemicals are injected into the process line thus preventing back flow out of the process stream.



## FIXED TYPE CHEMICAL INJECTION QUILL

The fixed type chemical injection quill assembly Spraytech designed and fabricated as per customers requirement. The inlet connections are raised face, weld neck flanges and the process connections are blind raised face flanges.

The flanges have pressure ratings from 150 to 2500 LBS. Some quills included a slot on the tip that creates turbulence in the fluid flow that helps distribute the injected fluid.





# | SPRAY NOZZLES



## DA

FLOW RANGE : 1 TO 1250 LPM  
 SPRAY ANGLE : 15, 30, 45, 60, 90, 120  
 MATERIAL : SS304, SS316, BRASS  
 END CONNECTION : 1/8" To 4"

FULL CONE SPRAY



## DB

FLOW RANGE : 1 TO 1250 LPM  
 SPRAY ANGLE : 45, 60, 90, 120  
 MATERIAL : SS304, SS316, BRASS  
 END CONNECTION : 1/8" To 4"

FULL CONE SPRAY



## DF

FLOW RANGE : 4.75 TO 3125 LPM  
 SPRAY ANGLE : 60, 90, 120, 160  
 MATERIAL : SS304, SS316, BRASS  
 END CONNECTION : 1/4" To 4"

FULL CONE SPRAY



## DG

FLOW RANGE : 1.5 TO 65 LPM  
 SPRAY ANGLE : 75, 130  
 MATERIAL : SS304, SS316, BRASS  
 END CONNECTION : 1/2", 3/4"

FULL CONE SPRAY



## DH

FLOW RANGE : 12.5 TO 227 LPM  
 SPRAY ANGLE : 130  
 MATERIAL : SS304, SS316, BRASS  
 END CONNECTION : 1/4", 1", 1-1/2"

FULL CONE SPRAY



## DI

FLOW RANGE : 3.5 TO 80 LPM  
 SPRAY ANGLE : 60, 90, 120  
 MATERIAL : SS304, SS316, BRASS  
 END CONNECTION : 1/4" To 1"

FULL CONE SPRAY



## DJ

FLOW RANGE : 3.5 TO 80 LPM  
 SPRAY ANGLE : 60, 90, 120  
 MATERIAL : SS304, SS316, BRASS  
 END CONNECTION : 1/4" To 1"

FULL CONE SPRAY



## DM

FLOW RANGE : 4 TO 72 LPM  
 SPRAY ANGLE : 45, 60, 90, 130  
 MATERIAL : SS304, SS316, BRASS  
 END CONNECTION : 1/2", 3/4", 1"

FULL CONE SPRAY



## DN

FLOW RANGE : 0.3 TO 1 LPM  
 SPRAY ANGLE : 45, 60, 90  
 MATERIAL : SS304, SS316, BRASS  
 END CONNECTION : 1/4"

SEMI-FULL CONE SPRAY



## BA

FLOW RANGE : 0.5 TO 80 LPM  
 SPRAY ANGLE : 60, 90, 120  
 MATERIAL : SS304, SS316, BRASS  
 END CONNECTION : 1/8", 1/4", 3/8", 1/2", 3/4"

HOLLOW CONE SPRAY



## BB

FLOW RANGE : 0.5 TO 80 LPM  
 SPRAY ANGLE : 60, 90, 120  
 MATERIAL : SS304, SS316, BRASS  
 END CONNECTION : 1/8", 1/4", 3/8", 1/2", 3/4"

HOLLOW CONE SPRAY



## BG

FLOW RANGE : 0.5 TO 80 LPM  
 SPRAY ANGLE : 60, 90, 120  
 MATERIAL : SS304, SS316, BRASS  
 END CONNECTION : 1/4", 3/8", 1/2", 3/4", 1-1/2"

HOLLOW CONE SPRAY



## BK

FLOW RANGE : 0.75 TO 100 GPH  
 SPRAY ANGLE : 45, 60, 75, 90  
 MATERIAL : SS303, SS316, BRASS  
 END CONNECTION : 9/16" UNEF (M)

SEMI-FULL CONE SPRAY



## BKB

FLOW RANGE : 0.03 TO 0.40 LPM  
 SPRAY ANGLE : 45, 60, 75, 90  
 MATERIAL : SS303, SS316, BRASS  
 END CONNECTION : 1/4" (M)

SEMI-FULL CONE SPRAY



## DASA

SPRAY PATTERN : FULL CONE  
 ORIFICE RANGE : 0.5 - 2.0 MM  
 SPRAY ANGLE : 20  
 MATERIAL : SS304, SS316, BRASS  
 END CONNECTION : 1/4" BSP (F)

AIR ATOMIZING SPRAY



## MAXFLOW

SPRAY PATTERN : FULL CONE  
 FLOW RANGE : 1 - 60 LPM  
 SPRAY ANGLE : 45, 60, 90, 120  
 MATERIAL : SS304, SS316, BRASS  
 END CONNECTION : 3/8", 1/2", 3/4"

AIR ATOMIZING SPRAY

# QUALITY CONTROL SYSTEM

Spraytech's goal of Quality Assurance is to improve development and test processes so that defects do not arise when the product is being developed.

Spraytech offers a variety of options for the Chemical injection quill assembly. Chemical Injection Quills are used to introduce medium to highly corrosive inhibitors into the pipeline without damage to the side port or pipe wall at the point of injection.



ULTRASONIC TESTING



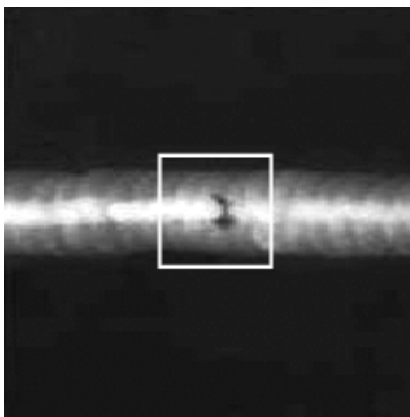
HARDNESS TESTING



DYE PENETRANT TESTING



MAGNETIC PARTICLE INSPECTION



RADIOGRAPHY



HYDROTESTING



POSITIVE MATERIAL IDENTIFICATION



DIMENSIONAL INSPECTION



DRY FILM THICKNESS

## CLIENT LIST



A Navratna Company



IndianOil



एमआरपीएल  
MRPL



Reliance  
Industries Limited



L&T Hydrocarbon



HMEL®  
Energising a Brighter Tomorrow



JACOBS®



INDORAMA



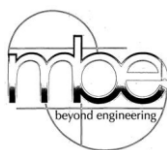
thyssenkrupp

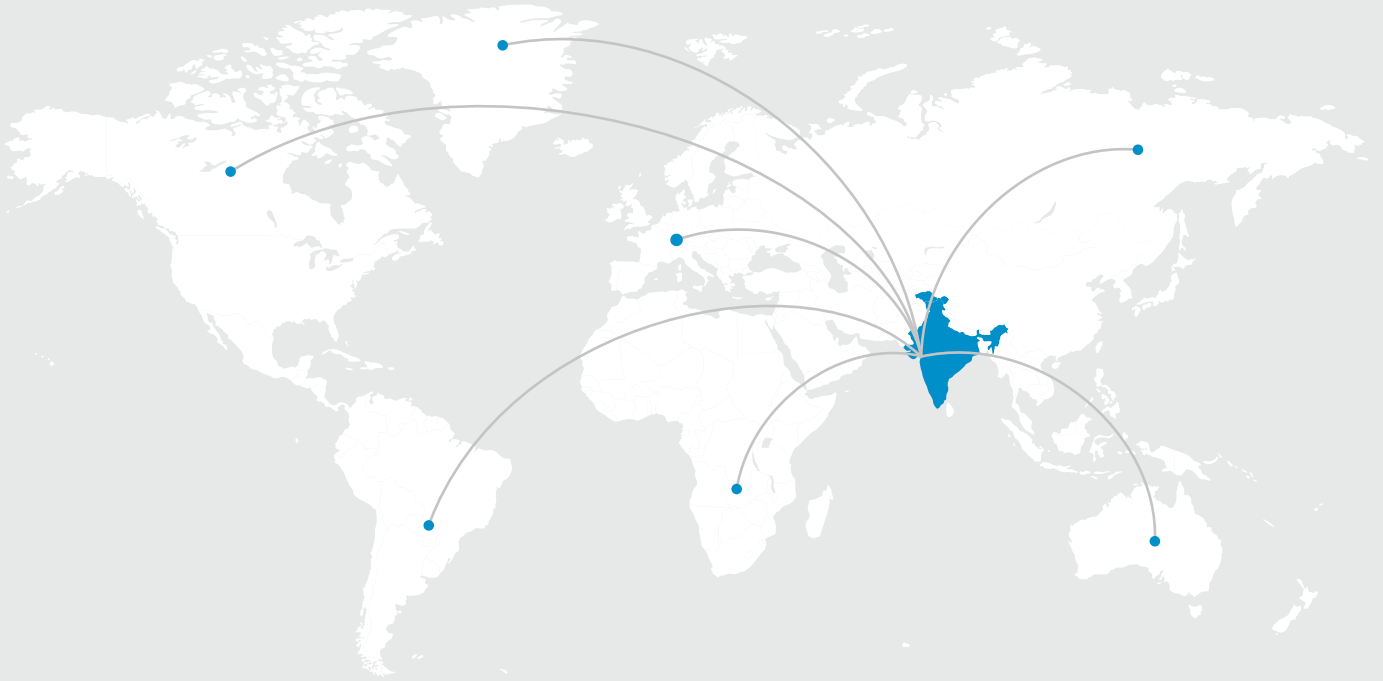


THERMAX



Assam petrochemicals limited





# OUR BRANCHES

**Regd. Office (Mumbai) :**

Spraytech House, Plot A-132, Road No. 23, Spraytech Circle,  
Wagle Indl. Estate, Thane (W) - 400 604. Mumbai Maharashtra, (India)  
Tel. : 91-022-2582-2736 / 2735  
E-mail :- sales@spraytechindia.com  
sales1@spraytechindia.com

**Rabale Plant 1 (Navi Mumbai) :**

Spraytech Systems (I) Pvt. Ltd., Plot No.: R-513, MIDC, TTC Industrial  
Area, Rabale, Navi Mumbai - 400 701.

**Rabale Plant 2 (Navi Mumbai) :**

R-446, T.T.C. Industrial Area, MIDC Rabale,  
Navi Mumbai - 400 701.

**Branch Office (Pune) :**

White House, Survey no. 161, Near  
Bhosale Garden Hadapsar, Pune 411028

**Indapur Plant (Pune) :**

Spraytech Systems (I) Pvt. Ltd., Plot No.: A-5, Indapur Five Star  
Industrial Area, Village - Loni Devkar Balpudi, Tal. - Indapur,  
Dist. - Pune. - 413132



Visit Website